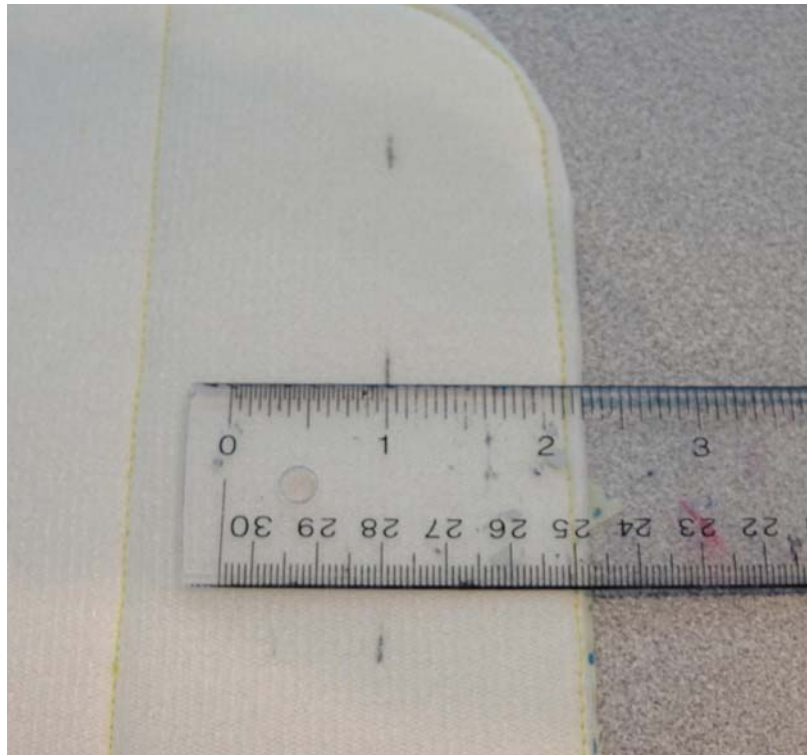
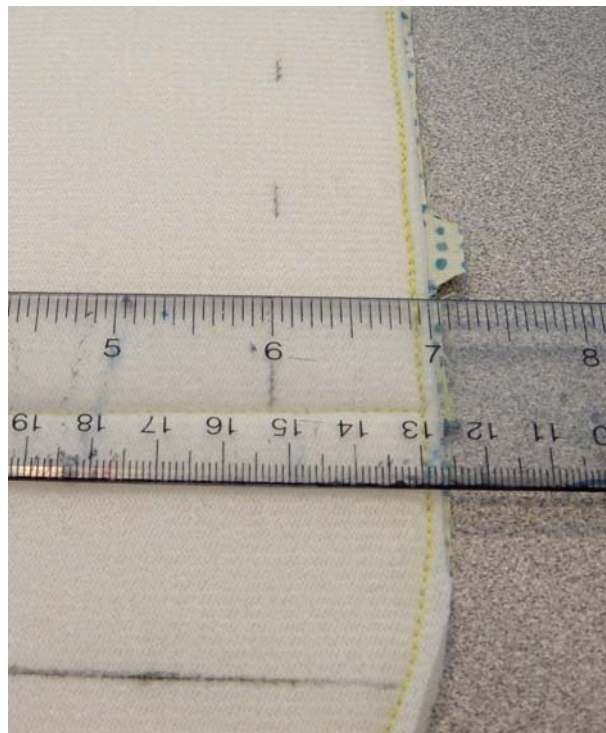


## *Baggalista- Step 9. Magnet Placement*



The easiest way to place the magnets is to make your marks DIRECTLY on the Soft & Stable. First make several marks that are 1 1/4" from the STRAIGHT bottom edge of the Form. Then, simply draw a straight line thru the marks.

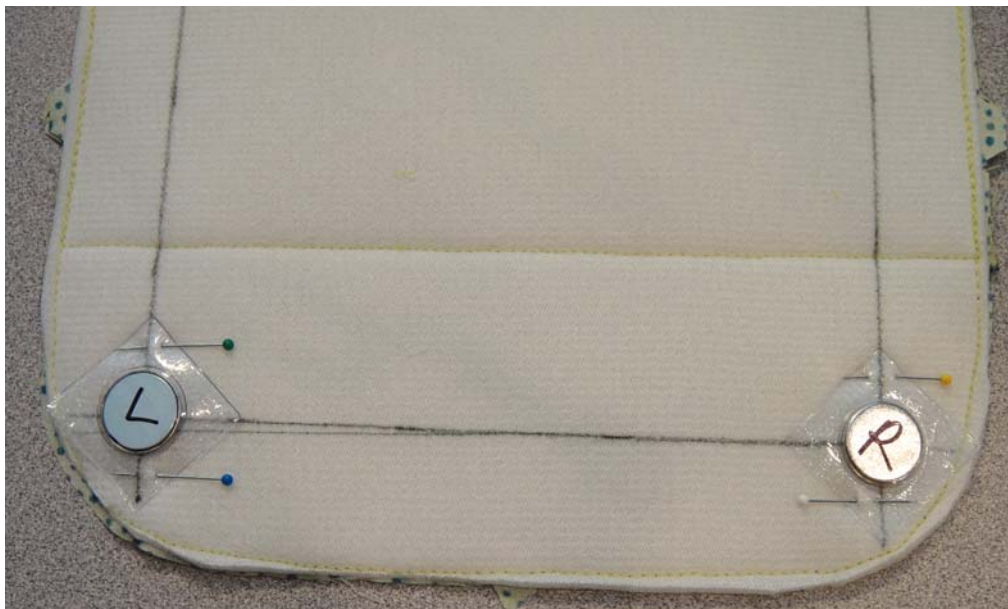


Now make similar marks that are 1" from each straight side edge of the Soft & Stable, connecting the marks to make a straight line when you are done.

## *Baggalista- Step 9. Magnet Placement- page 2*



Now place the center of your snap at the intersection of these marks (with the label facing UP). It's pretty easy to pin thru the relatively soft plastic to the Soft & Stable below.



Be sure to place a magnet with an 'R' on the right side, and one with an 'L' on the left.

## *Baggalista- Step 9. Magnet Placement- page 3*



Now all you have to do is sew it in place. My machine will do so with a regular zipper foot in place, but I hear tell that some folks find it necessary to utilize a zipper foot for the sewing. Make SURE you reinforce this stitching so that your snap doesn't get loose from usage.